



SCOTT'S HOTRODS 'n CUSTOMS • 2212 MOHAWK AVE, KNOXVILLE, TN 37915 • 865-951-2081 • www.SCOTTSHOTRODS.com

Scott's Hotrods Motor Mount Installation Instructions

Scott's Hotrods manufactures motor mounts for many different engines and they all install in a similar fashion.

The Motor Mount kit includes: 2 Motor Mounts, 4 D-Tabs, hardware, 2 Sleeves & 4 half-bushings (already pressed into the Motor Mount). The Kit does not include the hardware to bolt the motor mount to your block.

The Motor Mounts are fabricated from steel and TIG-welded. You may paint them or powder coat them, but we recommend you test fit everything first. If you Powder Coat the Motor Mount, be sure to remove the bushings first.



Step 1: Bolt the Motor Mounts to your block with your hardware. Do not torque them down at this time. Simply snug them up, but not too tight so you can wiggle them into place if needed. The Driver's Side is labeled with a "D" and the Passenger Side with a "P."

Step 2: Lower your Motor into the desired position in your engine bay. We recommend about a 3° angle front-to-back, but that does not have to be exact.

Step 3: The 6" D-Tabs are Trim-to-Fit. You can use poster board to make a template of the shape you need to cut the D-Tab to for proper fitment. Mark your frame where the D-Tabs will land.

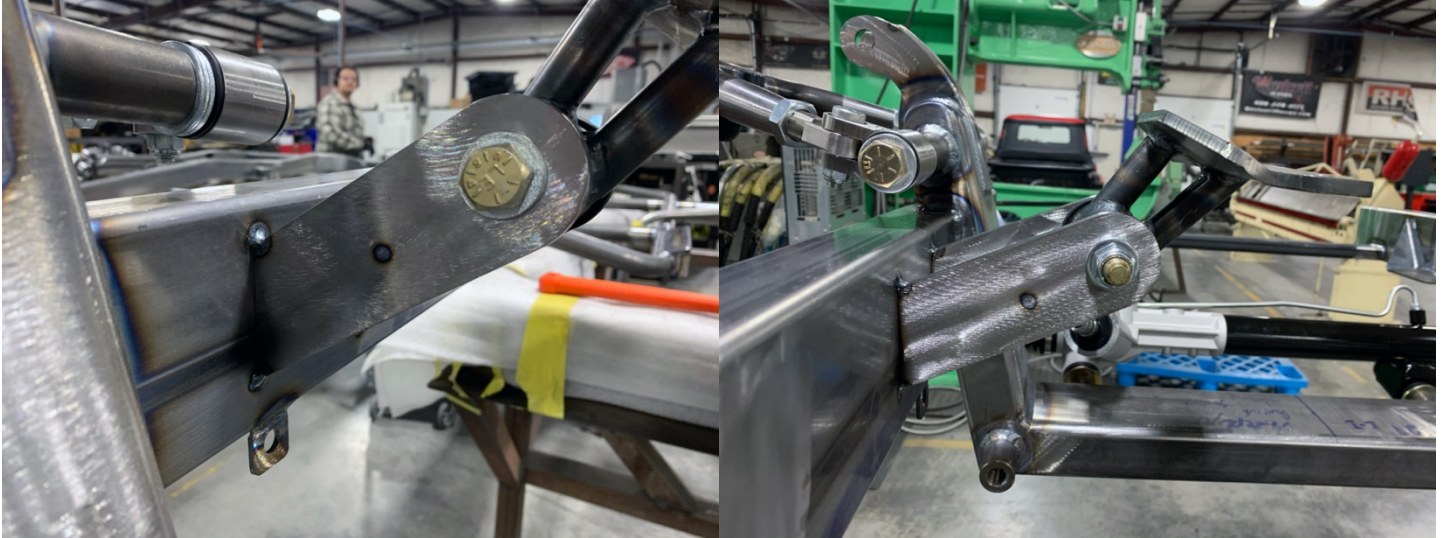
Note: The D-Tabs do not have to match. One might be clocked at a different angle than the other to allow for Steering or Header Clearance.

Step 4: Cut the D-Tabs to match your templates.



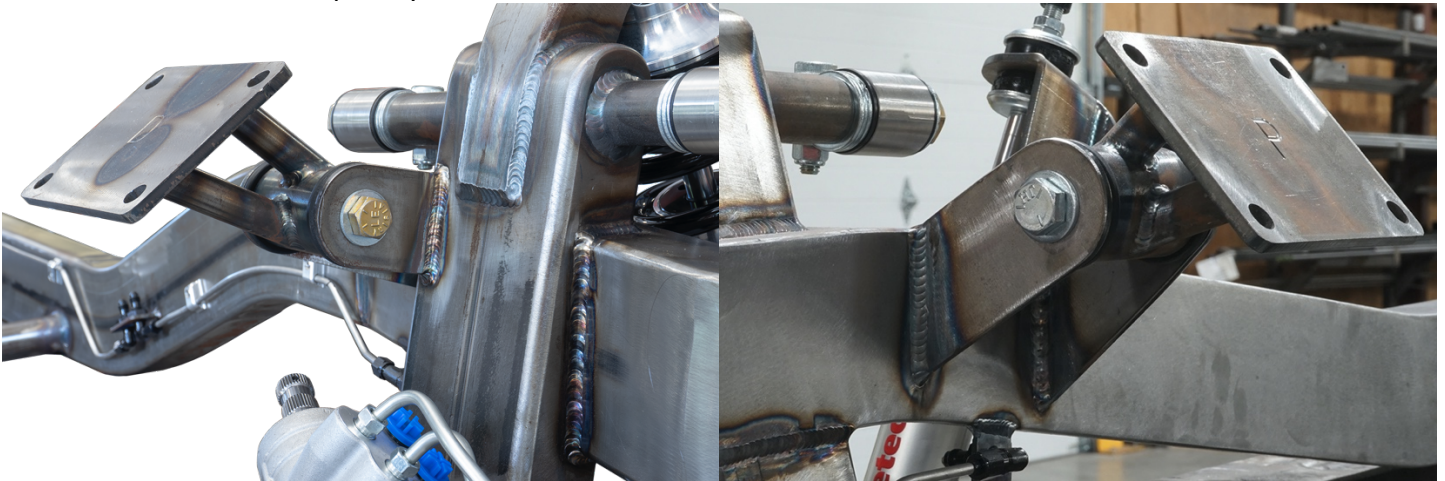
SCOTT'S HOTRODS 'n CUSTOMS • 2212 MOHAWK AVE, KNOXVILLE, TN 37915 • 865-951-2081 • www.SCOTTSHOTRODS.com

Step 5: TACK your Motor Mounts into place where you marked your frame. **DO NOT WELD COMPLETELY!** It'll be easier if you lift your engine up and out of the way.



Step 6: Lower your motor back down and slide the bushing side of the mount in between your tacked D-Tabs. Be sure you can slide the long bolts through. Sometimes they need a little encouragement from a mallet. This is why the Bolts holding the mount to block should not be fully torqued at this time.

Step 7: Once you have checked for proper fitment, remove your motor so you can completely weld in your D-tabs 360°. Failure to completely weld-in the D-tabs could cause disaster.



Step 8: Once your D-tabs are fully welded lower your motor back down and slide the long bolts through each mount and snug them up. Do not tighten them down so much that they deform the bushing. Then Torque down the Bolts on your block to factory spec of your motor.

If you have ANY questions before, during or after installation, please do not hesitate to call us: 865-951-2081 Monday-Friday 8am-5pm Eastern Time.